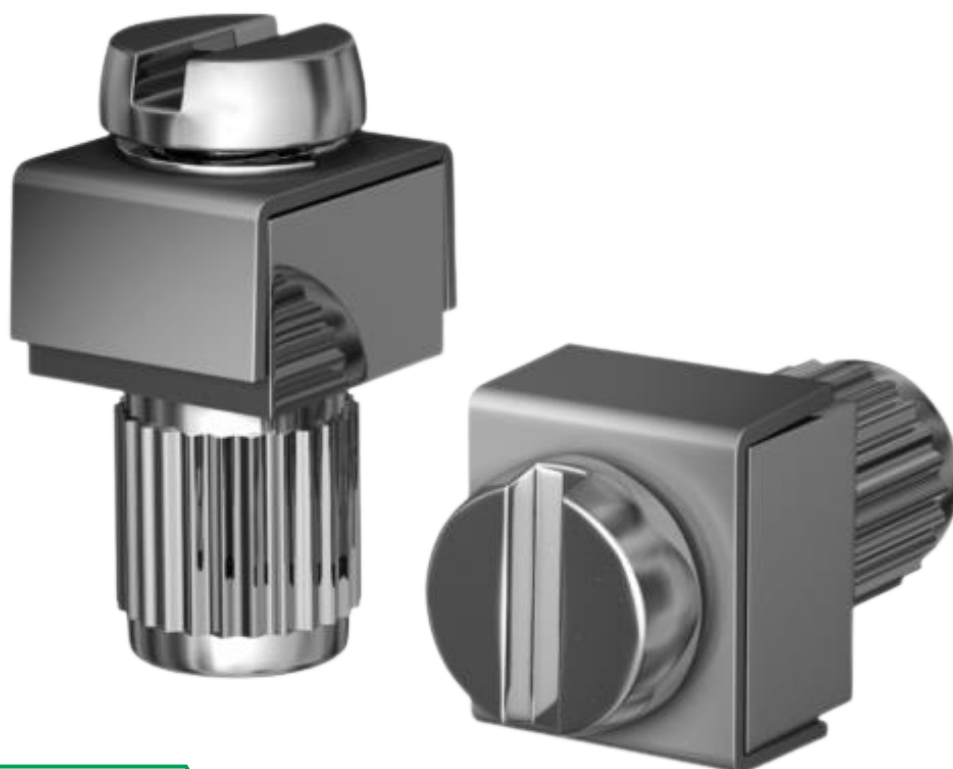


GROUNDING TERMINAL 5

TT5



GROUNDING TERMINAL 5

Technical data

TECHNICAL SPECIFICATION

APPLICATION

Grounding terminal for general-purpose metal electrical equipment and specifically designed for use on the thick walls of Ex d and Ex e equipment.

CONNECTION.....

Up to 6 mm²

DESCRIPTION.....

Grounding terminal made of 316 stainless steel for metal enclosures, equipped with a screw and lock washer, which ensures a secure fastening resistant to vibrations or mechanical shocks.

DIMENSIONS(MM):

